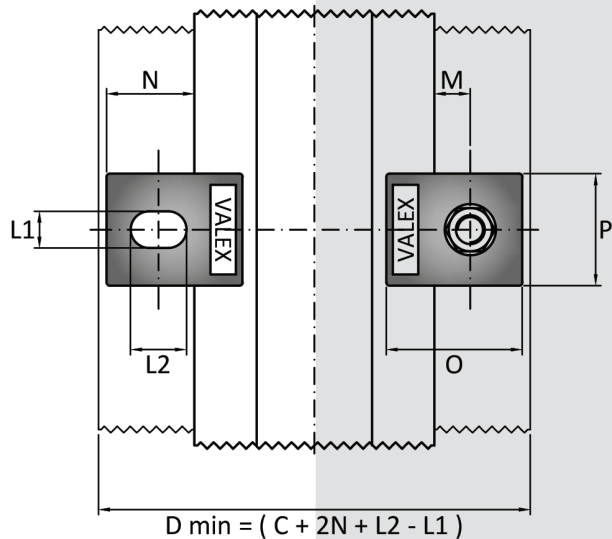
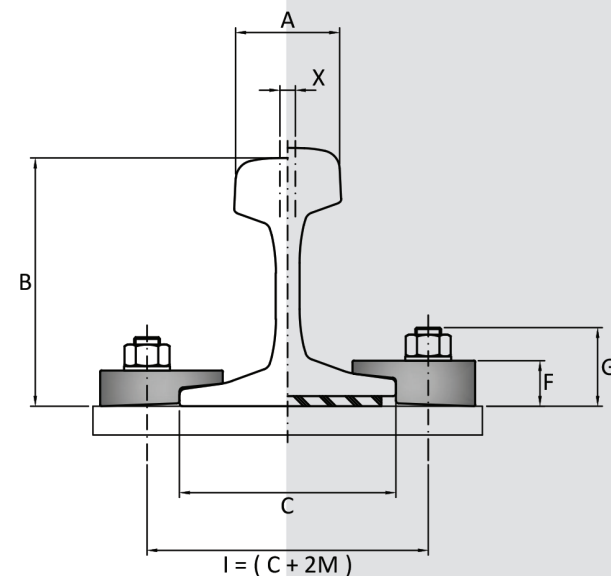




RAIL WITHOUT PAD



RAIL WITH PAD

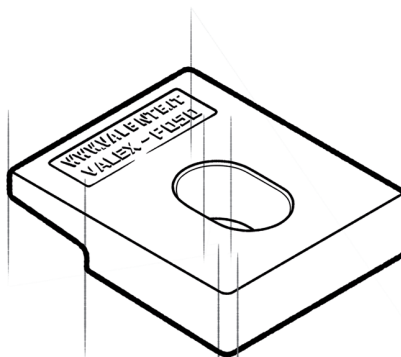


FEATURES

- System made up of one clip and bolt.
- Possibility of lateral adjustment.
- Easy and simple installation.
- Easy and simple maintenance.

COMPONENT PROVIDED

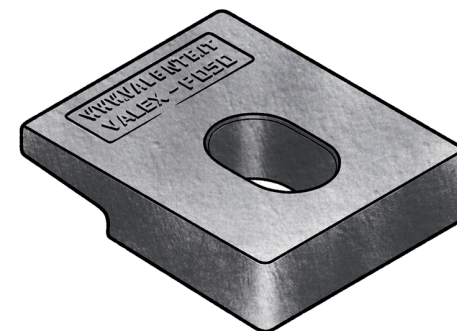
- Clip



APPLICATIONS

Developed for crane rails, VALEX F050 direct fastening system is used, with excellent results, also with train and light rails.

A very rugged, reliable, contained dimensions fastening system, used with any type of crane independently of driving system.

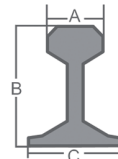


Dimensions [mm]	E	F	G	H	L	L1	L2	M	N	O	P	Weight [g]
VALEX F050	-	21	50	-	-	23	35	23	55	85	70	670



RAIL TYPE	A [mm]	B [mm]	C [mm]	Weight [kg/m]	WITHOUT PAD	WITH PAD
A 45	45	55	125	22,1	VALEX F050	-
A 55	55	65	150	31,8	VALEX F050	-
A 65	65	75	175	43,1	VALEX F050	-
A 75	75	85	200	56,2	VALEX F050	-
A 100	100	95	200	74,3	-	-
A 120	120	105	220	100	-	-
A 150	150	150	220	150,3	-	-
CR 104	63,5	127	127	51,59	-	-
CR 105	65,1	131,8	131,8	52,09	-	-
CR 135	76,2	146	131,8	66,97	-	-
CR 171	101,6	152,4	152,4	84,83	-	-
MRS 87 A	101,6	152,4	152,4	86,8	-	-
CR 175	102,4	152,4	152,4	86,8	-	-
MRS 125	120	180	180	125	-	-
S 7	25	65	50	6,75	-	-
S 10	32	70	58	10	-	-
S 14	38	80	70	14	-	-
S 18	43	93	82	18,3	-	-
S 20	44	100	82	19,8	-	-
S 24	53	115	90	24,43	VALEX F050	-
25 kg/m	50	115	90	25	VALEX F050	-
S 26 (AFNOR 26)	50	110	100	26,27	VALEX F050	-
27 E1 (27 UNI)	50	120	95	27,06	VALEX F050	-
AFNOR 30	56	125,5	106	29,98	VALEX F050	-
30 E1 (S 30)	60,3	108	108	30,13	VALEX F050	-
33 E1 (S 33)	58	134	105	33,47	VALEX F050	-
36 E1 (36 UNI)	60	130	100	36,26	-	-
40 E1 (S 41-R14)	67	138	125	40,95	VALEX F050	-
46 E4 (46 UNI)	65	145	135	46,9	-	-
49 E1 (S 49)	67	149	125	49,39	-	-
50 E5 (50 UNI)	67	148	135	49,9	VALEX F050	-
54 E1 (UIC 54)	70	159	140	54,77	VALEX F050	-
60 E1 (UIC 60)	72	172	150	60,21	-	-

System can be used with more rail type than those listed, complete range of usable rails available on request.
Products and specifications are subject to change without previous notice.



GENERAL INSTRUCTIONS

The selection of a fastening system is a critical, important decision both when placing a track or a single rail.
The wrong selection could have expensive consequences and create serious problems such as:

- Slow down or shut down of the production process.
- Excessive and, or irregular wear of rails.
- Damage of mechanical components of crane.
- Damage to supporting base.
- Damage to fastening systems.

VALEX fastening systems have been developed building on the experience over more than 100 years of activity.
VALENTE fastening systems offer an unlimited selection of alternatives, which perform in the most effective and efficient way in every situation.

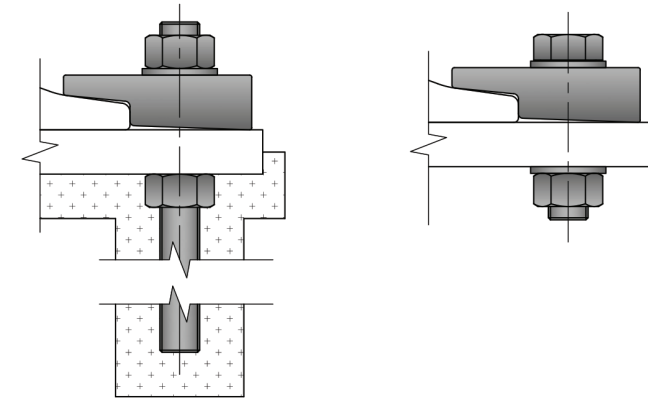
ASSEMBLING INSTRUCTION

- Place clip facing the rail according to drawing at the distance indicated in the technical card.
- Insert screw.
- Proceed to a light tightening.
- Control line up of rail.
- Complete tightening.

TECHNICAL SPECIFICATIONS

- Lateral adjustment 8 [mm]
- Side load 70 [KN]
- Torque tightening 320 [Nm]
- Bolt M20 8.8 gr - NOT INCLUDED

FIXING DETAILS



VALENTE S.p.A., ISO 9001:2008 Certified, has, as its main objectives maximum assistance and total client satisfaction.

VALENTE S.p.A. assures and guarantees origin and quality of its products and provides all reasonable documentation and assistance.

Products and services provided by VALENTE S.p.A. generate a continuous know how, information and assistance flow, we engineer, manufacturer and market always responsible for our products and projects.

