



VALENTE

SPA

Headquarters:

Via Don Minzoni, 06
20020 Lainate - MI - Italy
Tel: +39 02.93799212 - Fax: +39 02.93799349
www.valente.it - info@valente.it
Skype: valentespa

Registered office:

P.zza S. Ambrogio, 1
20123 Milan - MI - Italy
Tel: +39 02.93799212 - Fax: +39 02.93799349
www.valente.it - info@valente.it
Skype: valentespa

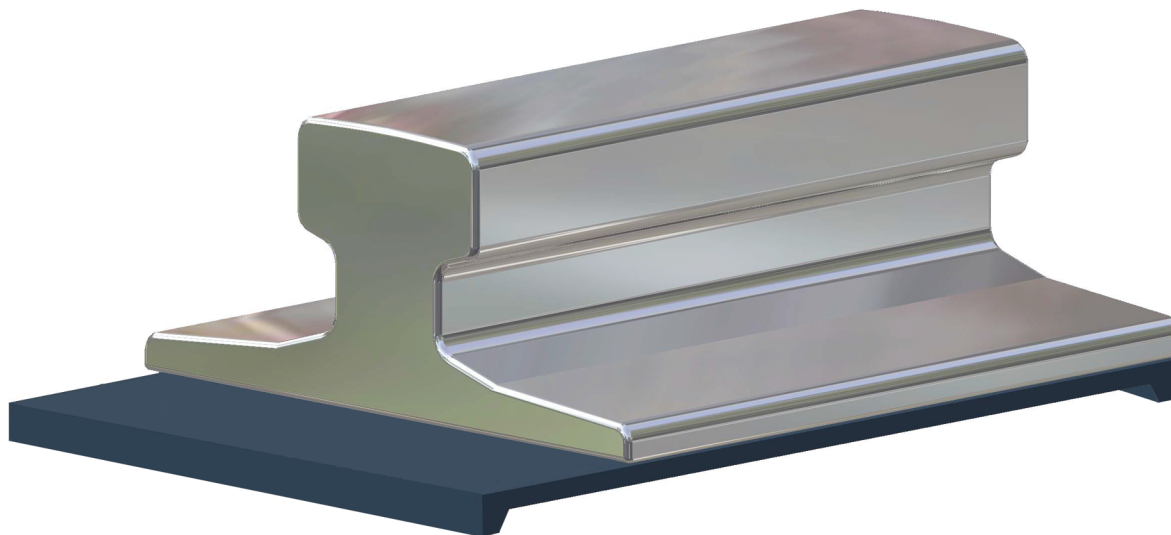
Administrative offices and warehouse:

Via Don Sturzo, 20
20020 Lainate - MI - Italy
Tel: +39 02.93799212 - Fax: +39 02.93799349
www.valente.it - info@valente.it
Skype: valentespa

Middle East branch:

VALENTE ME FZCO - Jebel Ali Free Zone - Dubai
P.O. Box 263179 - United Arab Emirates
Tel.: +971.4.8870411 - Fax: +971.4.8870412
www.valenteme.ae - info@valenteme.ae

COPOLYMER Eva PAD
for crane rails
VALEX VX1



APPLICATIONS

The copolymer pad Valex VX1 has been specifically developed for elastic laying of crane rails on discontinuous support. The Valex VX1 copolymer pad, when used jointly with the fastenings systems of the Valex series, reduce significantly stress and wear of the rail and of the mechanical components of the crane. It also helps to achieve an even distribution of the load on the supporting structure.

The use of the elastomer pad is suggested above all in the following situations:

- the rails are subject to heavy working conditions;
- the rails are subject to high vertical and/or lateral wheels stress;
- the rails are operating in extreme weather conditions;
- noise and vibrations shall be reduced to the minimum.



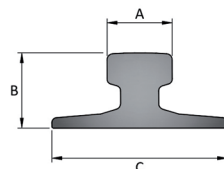
	A [mm]	B [mm]	C [mm]	VALEX VX1
S 7	25	65	50	VALEX VX1-045-X*
S 10	32	70	58	VALEX VX1-055-X*
S 14	38	80	70	VALEX VX1-065-X*
S 18	43	93	82	VALEX VX1-075-X*
S 20	44	100	82	VALEX VX1-085-X*
S 24	53	115	90	VALEX VX1-085-X*
25 Kg/m	50	115	90	VALEX VX1-085-X*
S 26 - 26 AFNOR	50	110	100	VALEX VX1-095-X*
27 Kg/m	50	120	95	VALEX VX1-090-X*
30 AFNOR	58,6	125,5	106	VALEX VX1-100-X*
S 30	60,3	108	108	VALEX VX1-100-X*
S 33	58	134	105	VALEX VX1-100-X*
36 UNI 3141	60	130	100	VALEX VX1-095-X*
46 UNI 3141	65	145	135	VALEX VX1-120-X*
49 E5 (S)	67	149	125	VALEX VX1-120-X*
50 E5 (UIC)	67	148	135	VALEX VX1-120-X*
54 E5 (UIC)	72,2	159	140	VALEX VX1-120-X*
60 E1 (UIC)	72	172	150	VALEX VX1-146-X*
A 45	45	55	125	VALEX VX1-120-X*
A 55	55	65	150	VALEX VX1-146-X*
A 65	65	75	175	VALEX VX1-170-X*
A 75	75	85	200	VALEX VX1-195-X*
A 100	100	95	200	VALEX VX1-195-X*
A 120	120	105	220	VALEX VX1-210-X*
A 150	150	150	220	VALEX VX1-210-X*
MRS 87A	101,6	152,4	152,4	VALEX VX1-146-X*
MRS 125	120	180	180	VALEX VX1-170-X*
CR 73	100	135	140	VALEX VX1-120-X*
CR 100	120	150	155	VALEX VX1-146-X*
CR 104	63,5	127	127	VALEX VX1-120-X*
CR 105	65	131,7	131,7	VALEX VX1-120-X*
CR 135	87,3	146	131,7	VALEX VX1-120-X*
CR 171	109,2	152,4	152,4	VALEX VX1-146-X*
CR 175	102,4	152,4	152,4	VALEX VX1-146-X*

* size "X" depends on the base plate legth

Pad can be used with more type of rails than those listed.

Complete range of the usable rails available on request.

Products and specifications could be changed without previous notice.



Technical specifications:

The Valex VX1 pad:

- is manufactured with strain and wear resistant synthetic copolymer;
- even in the extreme operating conditions, the pad does not misplace laterally;
- is not damaged by oil, grease, ozone and by the exposure to ultra-violet rays;
- reduces significantly noise and vibrations;
- greatly reduces load concentrations and fatigue stress;
- eliminates uneven contacts between rails and the support structure;
- protects the crane mechanical components and reduces the wear of wheels, bearings and axles.

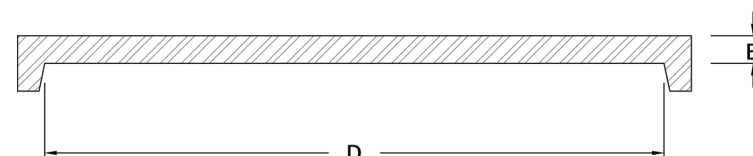
Technical and physical specifications of the copolymer:

- Hardness: 90° +/-5 Shore A Din 53505
- Tensile strength: 13 N/mm² Din 53455
- Extension: 280% Din 53505
- Permanent deformation: 5% (max.) A 23°C
- Working temperature: - 30° to 80° C
- Noise reduction: 10% DbA
- Vibration reduction: among 30 et 40%
- Lengths available: on request

Assembling instructions:

Before laying the pad, the supporting area shall be clean and free of oil, grease and every jut or unevenness, which could damage the pad.

Peso/Weight/Poids (kg)	VALEX VX1	D	E
0,50	VALEX VX1-045-X*	X*	6
0,60	VALEX VX1-055-X*	X*	6
0,70	VALEX VX1-065-X*	X*	6
0,75	VALEX VX1-075-X*	X*	6
0,80	VALEX VX1-085-X*	X*	6
0,85	VALEX VX1-090-X*	X*	6
0,90	VALEX VX1-095-X*	X*	6
0,95	VALEX VX1-100-X*	X*	6
1,10	VALEX VX1-120-X*	X*	6
1,30	VALEX VX1-146-X*	X*	6
1,40	VALEX VX1-170-X*	X*	6
1,50	VALEX VX1-195-X*	X*	6
1,70	VALEX VX1-210-X*	X*	6



VALENTE SPA, ISO 9001:2008 Certified, has as its main objectives maximum assistance and total satisfaction of its clients.

VALENTE SPA assures and guarantees the origin and quality of its products and provides all the documentation and assistance which could be reasonably requested.

The products and the services offered by VALENTE SPA generate a continuous flow of information and assistance. We are engineers, manufacturers and sellers always available and responsible.