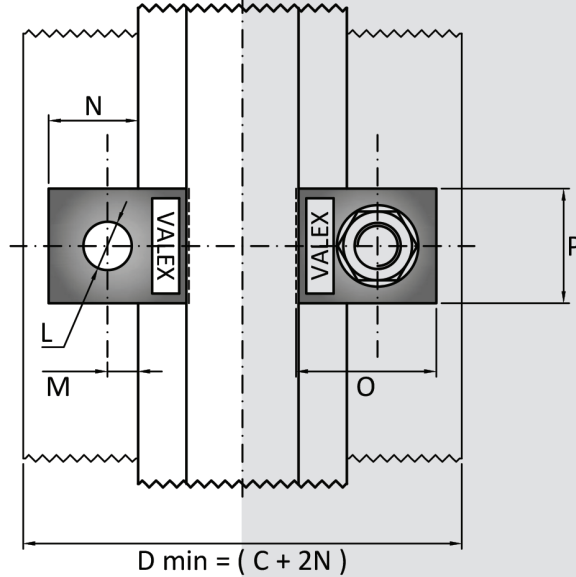


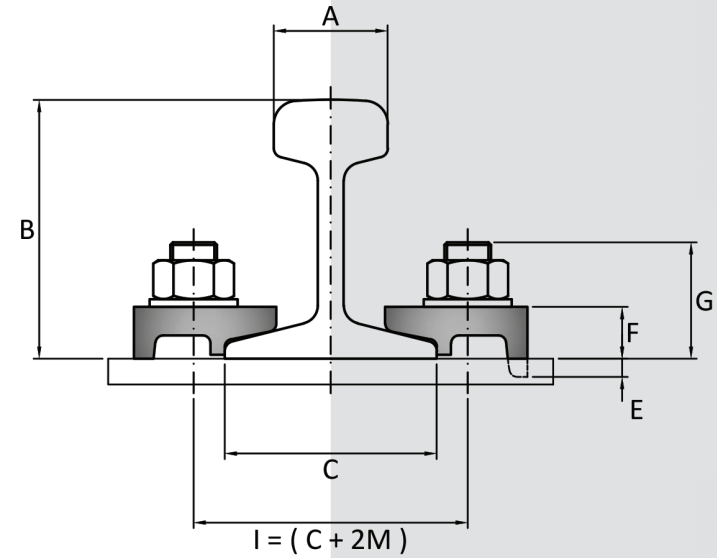


RAIL WITHOUT PAD



RAIL WITH PAD

RAIL WITHOUT PAD



RAIL WITH PAD

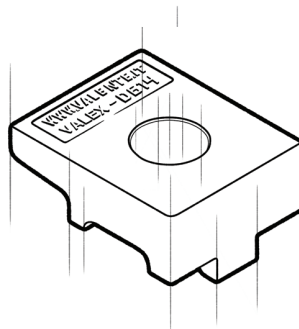
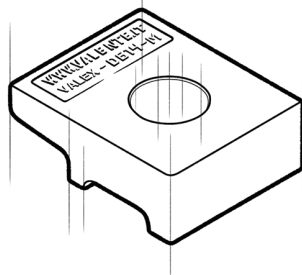
FEATURES

- System made up of one clip.
- Easy and simple installation.
- Easy and simple maintenance.

COMPONENT PROVIDED

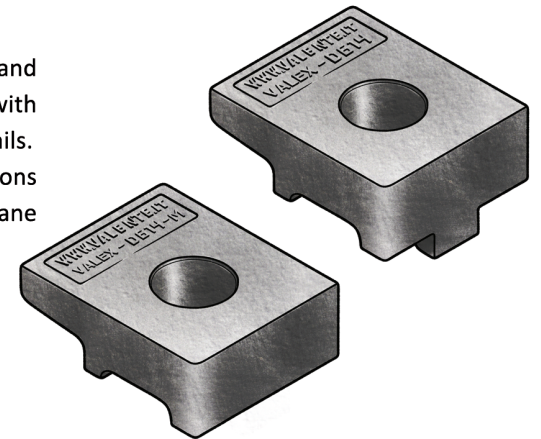
- 1 VALEX D614
2 VALEX D614M

2



APPLICATIONS

Developed for Dacauvilli rails, VALEX D614 and D614M direct fastening system is used, with excellent results, also with train and light rails. A very rugged, reliable, contained dimensions fastening system, used with any type of crane independently of driving system.

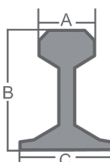


| Dimensions [mm] | E | F | G | H | L | L1 | L2 | M | N | O | P | Weight [g] |
|-----------------|---|----|----|---|----|----|----|----|----|----|----|------------|
| VALEX D614 | 7 | 13 | 35 | - | 18 | - | - | 12 | 35 | 46 | 44 | 130 |
| VALEX D614-M | - | 13 | 35 | - | 18 | - | - | 12 | 35 | 46 | 44 | 120 |



| RAIL TYPE | A [mm] | B [mm] | C [mm] | Weight [kg/m] | WITHOUT PAD | WITH PAD |
|------------------|-----------|-----------|-----------|------------------|--------------|----------|
| A 45 | 45 | 55 | 125 | 22,1 | VALEX D614/M | - |
| A 55 | 55 | 65 | 150 | 31,8 | - | - |
| A 65 | 65 | 75 | 175 | 43,1 | - | - |
| A 75 | 75 | 85 | 200 | 56,2 | - | - |
| A 100 | 100 | 95 | 200 | 74,3 | - | - |
| A 120 | 120 | 105 | 220 | 100 | - | - |
| A 150 | 150 | 150 | 220 | 150,3 | - | - |
| CR 104 | 63,5 | 127 | 127 | 51,59 | - | - |
| CR 105 | 65,1 | 131,8 | 131,8 | 52,09 | - | - |
| CR 135 | 76,2 | 146 | 131,8 | 66,97 | - | - |
| CR 171 | 101,6 | 152,4 | 152,4 | 84,83 | - | - |
| MRS 87 A | 101,6 | 152,4 | 152,4 | 86,8 | - | - |
| CR 175 | 102,4 | 152,4 | 152,4 | 86,8 | - | - |
| MRS 125 | 120 | 180 | 180 | 125 | - | - |
| S 7 | 25 | 65 | 50 | 6,75 | VALEX D614/M | - |
| S 10 | 32 | 70 | 58 | 10 | VALEX D614/M | - |
| S 14 | 38 | 80 | 70 | 14 | VALEX D614/M | - |
| S 18 | 43 | 93 | 82 | 18,3 | VALEX D614/M | - |
| S 20 | 44 | 100 | 82 | 19,8 | VALEX D614/M | - |
| S 24 | 53 | 115 | 90 | 24,43 | VALEX D614/M | - |
| 25 kg/m | 50 | 115 | 90 | 25 | VALEX D614/M | - |
| S 26 (AFNOR 26) | 50 | 110 | 100 | 26,27 | - | - |
| 27 E1 (27 UNI) | 50 | 120 | 95 | 27,06 | - | - |
| AFNOR 30 | 56 | 125,5 | 106 | 29,98 | - | - |
| 30 E1 (S 30) | 60,3 | 108 | 108 | 30,13 | - | - |
| 33 E1 (S 33) | 58 | 134 | 105 | 33,47 | - | - |
| 36 E1 (36 UNI) | 60 | 130 | 100 | 36,26 | - | - |
| 40 E1 (S 41-R14) | 67 | 138 | 125 | 40,95 | - | - |
| 46 E4 (46 UNI) | 65 | 145 | 135 | 46,9 | - | - |
| 49 E1 (S 49) | 67 | 149 | 125 | 49,39 | - | - |
| 50 E5 (50 UNI) | 67 | 148 | 135 | 49,9 | - | - |
| 54 E1 (UIC 54) | 70 | 159 | 140 | 54,77 | - | - |
| 60 E1 (UIC 60) | 72 | 172 | 150 | 60,21 | - | - |

System can be used with more rail type than those listed, complete range of usable rails available on request.
 Products and specifications are subject to change without previous notice.



GENERAL INSTRUCTIONS

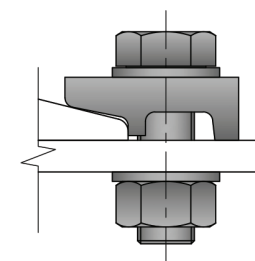
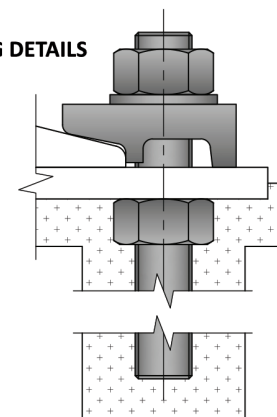
The selection of a fastening system is a critical, important decision both when placing a track or a single rail.
 The wrong selection could have expensive consequences and create serious problems such as:

- Slow down or shut down of the production process.
- Excessive and, or irregular wear of rails.
- Damage of mechanical components of crane.
- Damage to supporting base.
- Damage to fastening systems.

VALEX fastening systems have been developed building on the experience accumulated over more than 100 years of activity.

VALENTE fastening systems offer an unlimited selection of alternatives, which perform in the most effective and efficient way in every situation.

FIXING DETAILS



ASSEMBLING INSTRUCTION

- Place clip facing the rail according to drawing at the distance indicated in the technical card.
- Insert screw.
- Proceed to a light tightening.
- Control line up of rail.
- Complete tightening.

TECHNICAL SPECIFICATIONS D614

- Side load 35 [KN]
- Torque tightening 175 [Nm]
- Bolt M16 8.8 gr - NOT INCLUDED

TECHNICAL SPECIFICATIONS D614M

- Side load 30 [KN]
- Torque tightening 175 [Nm]
- Bolt M16 8.8 gr - NOT INCLUDED



VALENTE S.p.A., ISO 9001:2008 Certified, has, as its main objectives maximum assistance and total client satisfaction.

VALENTE S.p.A. assures and guarantees origin and quality of its products and provides all reasonable documentation and assistance.

Products and services provided by VALENTE S.p.A. generate a continuous know how, information and assistance flow, we engineer, manufacturer and market always responsible for our products and projects.