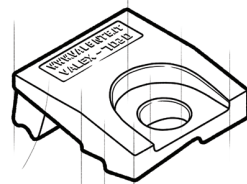


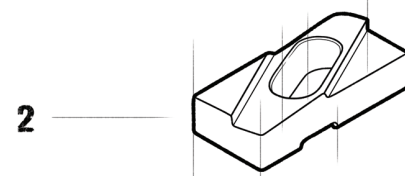
FEATURES

- Elastic fastening of rails with or without pad.
- System made up of two interlocked elements, which allow easy clip lateral adjustment.
- System components locked together by a special bolt.
- Elastomer nose increases rail-support structure tolerances, reduces connections stress, allows a better rail fixing.
- System lower element easily weldable to rail support.



COMPONENT PROVIDED

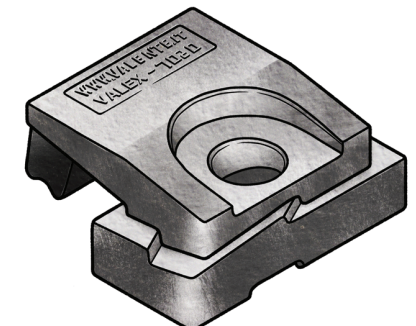
- 1 Upper clip vulcanized rubber nose
- 2 Lower clip



APPLICATIONS

Developed for crane rail, VALEX 7020 direct fastening system is used, with excellent results, also for train and light rails.

A very rugged, reliable, contained dimensions fastening system, used with any type of crane independently of the driving system.

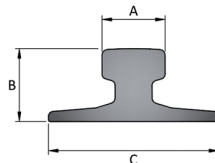


Dimensions [mm]	E	F	G	H	L	L1	L2	M	N	O	P	Weight [g]
VALEX 7020-40-10	24	40	55	19	-	-	-	-	-	-	-	950
VALEX 7020-40-15	24	40	55	14	-	-	-	-	-	-	-	950
VALEX 7020-40-19	24	40	55	10	-	-	-	-	-	-	-	940
VALEX 7020-47-17	31	47	65	19	-	-	-	-	-	-	-	1120
VALEX 7020-47-22	31	47	65	14	-	-	-	-	-	-	-	1120
VALEX 7020-47-26	31	47	65	10	-	-	-	-	-	-	-	1110



RAIL TYPE	A [mm]	B [mm]	C [mm]	Weight [kg/m]	WITHOUT PAD	WITH PAD
A 45	45	55	125	22,1	-	-
A 55	55	65	150	31,8	-	-
A 65	65	75	175	43,1	-	-
A 75	75	85	200	56,2	VALEX 7020-40-10	VALEX 7020-40-15
A 100	100	95	200	74,3	VALEX 7020-40-10	VALEX 7020-40-15
A 120	120	105	220	100	VALEX 7020-40-10	VALEX 7020-40-15
A 150	150	150	220	150,3	VALEX 7020-40-15	VALEX 7020-40-19
CR 104	63,5	127	127	51,59	VALEX 7020-40-10	VALEX 7020-40-19
CR 105	65,1	131,8	131,8	52,09	VALEX 7020-40-10	VALEX 7020-40-15
CR 135	76,2	146	131,8	66,97	VALEX 7020-40-10	VALEX 7020-47-17
CR 171	101,6	152,4	152,4	84,83	VALEX 7020-40-15	VALEX 7020-47-22
MRS 87 A	101,6	152,4	152,4	86,8	VALEX 7020-40-15	VALEX 7020-47-22
CR 175	102,4	152,4	152,4	86,8	VALEX 7020-40-10	VALEX 7020-47-17
MRS 125	120	180	180	125	VALEX 7020-47-22	VALEX 7020-47-26
S 7	25	65	50	6,75	-	-
S 10	32	70	58	10	-	-
S 14	38	80	70	14	-	-
S 18	43	93	82	18,3	-	-
S 20	44	100	82	19,8	-	-
S 24	53	115	90	24,43	-	-
25 kg/m	50	115	90	25	-	-
S 26 (AFNOR 26)	50	110	100	26,27	-	VALEX 7020-40-10
27 E1 (27 UNI)	50	120	95	27,06	-	VALEX 7020-40-10
AFNOR 30	56	125,5	106	29,98	-	VALEX 7020-40-10
30 E1 (S 30)	60,3	108	108	30,13	-	VALEX 7020-40-15
33 E1 (S 33)	58	134	105	33,47	-	VALEX 7020-40-10
36 E1 (36 UNI)	60	130	100	36,26	-	-
40 E1 (S 41-R14)	67	138	125	40,95	-	-
46 E4 (46 UNI)	65	145	135	46,9	VALEX 7020-40-10	VALEX 7020-40-15
49 E1 (S 49)	67	149	125	49,39	VALEX 7020-40-10	VALEX 7020-40-15
50 E5 (50 UNI)	67	148	135	49,9	VALEX 7020-40-10	VALEX 7020-40-15
54 E1 (UIC 54)	70	159	140	54,77	VALEX 7020-40-10	VALEX 7020-40-15
60 E1 (UIC 60)	72	172	150	60,21	VALEX 7020-40-10	VALEX 7020-40-15

System can be used with more rail type than those listed, complete range of usable rails available on request.
Products and specifications are subject to change without previous notice.



GENERAL INSTRUCTIONS

The selection of a fastening system is a critical, important decision both when placing a track or a single rail.
The wrong selection could have expensive consequences and create serious problems such as:

- Slow down or shut down of the production process.
- Excessive and, or irregular wear of the rails.
- Damage of mechanical components of crane.
- Damage to supporting base.
- Damage to fastening systems.

VALEX fastening systems have been developed building on the experience accumulated over more than 100 years of activity.

VALENTE fastening systems offer an unlimited selection of alternatives, which perform in the most efficient way in every situation.

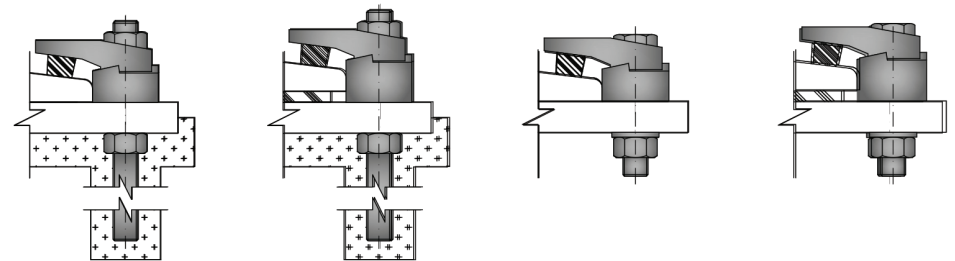
ASSEMBLY INSTRUCTIONS

- Place the lower clip facing the rail according to the drawing at the distance indicated in the technical card.
- Insert screw through steel support.
- Place the upper clip, washer and nut.
- Proceed to a light tightening.
- Control lineup of the rails.
- Complete tightening.

TECHNICAL SPECIFICATIONS

- Lateral adjustment 10 [mm]
- Side load 90 [KN]
- Torque tightening 320 [Nm]
- Bolt M20 8.8 gr - NOT INCLUDED

FIXING DETAILS



VALENTE S.p.A., ISO 9001:2008 Certified, has, as its main objectives maximum assistance and total client satisfaction.

VALENTE S.p.A. assures and guarantees origin and quality of its products and provides all reasonable documentation and assistance.

Products and services provided by VALENTE S.p.A. generate a continuous know how, information and assistance flow, we engineer, manufacturer and market always responsible for our products and projects.