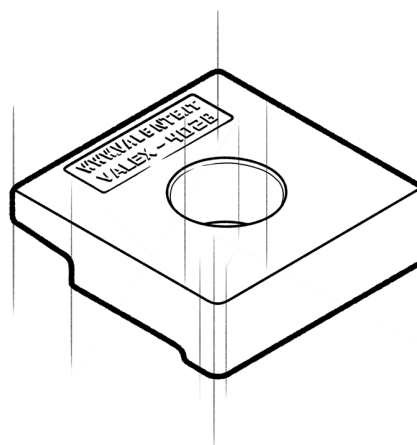


FEATURES

- System made up of one clip and bolt.
- Easy and simple installation.
- Easy and simple maintenance.

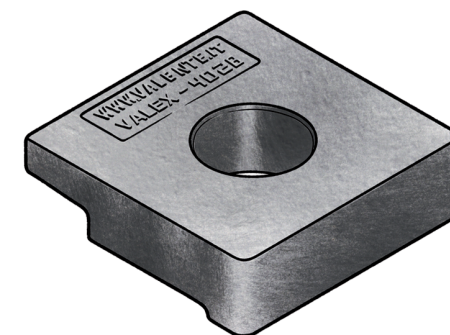
COMPONENT PROVIDED

- Clip



APPLICATIONS

Developed for crane rails, VALEX 4028 direct fastening system is used, with excellent results, also with train and light rails. A very rugged, reliable, contained dimensions fastening system, used with any type of crane independently of driving system.

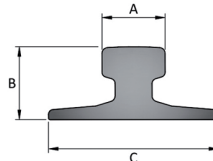


Dimensions [mm]	E	F	G	H	L	L1	L2	M	N	O	P	Weight [g]
VALEX 4028	-	28	60	-	-	27	27	18	50	70	70	690



RAIL TYPE	A [mm]	B [mm]	C [mm]	Weight [kg/m]	WITHOUT PAD	WITH PAD
A 45	45	55	125	22,1	-	-
A 55	55	65	150	31,8	-	VALEX 4028
A 65	65	75	175	43,1	-	VALEX 4028
A 75	75	85	200	56,2	-	VALEX 4028
A 100	100	95	200	74,3	-	VALEX 4028
A 120	120	105	220	100	VALEX 4028	-
A 150	150	150	220	150,3	VALEX 4028	-
CR 104	63,5	127	127	51,59	-	-
CR 105	65,1	131,8	131,8	52,09	-	VALEX 4028
CR 135	76,2	146	131,8	66,97	-	-
CR 171	101,6	152,4	152,4	84,83	VALEX 4028	-
MRS 87 A	101,6	152,4	152,4	86,8	VALEX 4028	-
CR 175	102,4	152,4	152,4	86,8	-	-
MRS 125	120	180	180	125	-	-
S 7	25	65	50	6,75	-	-
S 10	32	70	58	10	-	-
S 14	38	80	70	14	-	-
S 18	43	93	82	18,3	-	-
S 20	44	100	82	19,8	-	-
S 24	53	115	90	24,43	-	-
25 kg/m	50	115	90	25	-	-
S 26 (AFNOR 26)	50	110	100	26,27	-	-
27 E1 (27 UNI)	50	120	95	27,06	-	-
AFNOR 30	56	125,5	106	29,98	-	-
30 E1 (S 30)	60,3	108	108	30,13	-	VALEX 4028
33 E1 (S 33)	58	134	105	33,47	-	VALEX 4028
36 E1 (36 UNI)	60	130	100	36,26	-	VALEX 4028
40 E1 (S 41-R14)	67	138	125	40,95	-	VALEX 4028
46 E4 (46 UNI)	65	145	135	46,9	-	VALEX 4028
49 E1 (S 49)	67	149	125	49,39	-	VALEX 4028
50 E5 (50 UNI)	67	148	135	49,9	-	VALEX 4028
54 E1 (UIC 54)	70	159	140	54,77	-	VALEX 4028
60 E1 (UIC 60)	72	172	150	60,21	-	VALEX 4028

System can be used with more rail type than those listed, complete range of usable rails available on request.
Products and specifications are subject to change without previous notice.



GENERAL INSTRUCTIONS

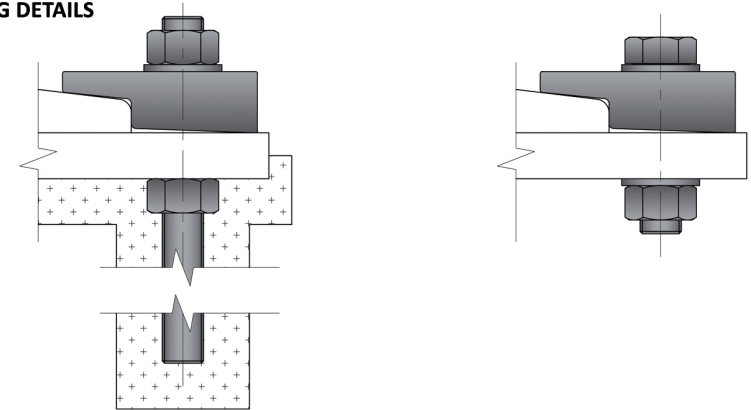
The selection of a fastening system is a critical, important decision both when placing a track or a single rail.
The wrong selection could have expensive consequences and create serious problems such as:

- Slow down or shut down of the production process.
- Excessive and, or irregular wear of rails.
- Damage of mechanical components of crane.
- Damage to supporting base.
- Damage to fastening systems.

VALEX fastening systems have been developed building on the experience accumulated over more than 100 years of activity.

VALENTE fastening systems offer an unlimited selection of alternatives, which perform in the most effective and efficient way in every situation.

FIXING DETAILS



VALENTE S.p.A., ISO 9001:2008 Certified, has, as its main objectives maximum assistance and total client satisfaction.

VALENTE S.p.A. assures and guarantees origin and quality of its products and provides all reasonable documentation and assistance.

Products and services provided by VALENTE S.p.A. generate a continuous know how, information and assistance flow, we engineer, manufacturer and market always responsible for our products and projects.

ASSEMBLING INSTRUCTION

- Place clip facing in the rail according to drawing at the distance indicated in the technical card.
- Insert screw.
- Proceed to light tightening.
- Control line up of rails.
- Complete tightening.

TECHNICAL SPECIFICATIONS

- Side load 95 [KN]
- Torque tightening 550 [Nm]
- Bolt M24 8.8 gr - NOT INCLUDED